

## EnoLogic NetFilter Business quick start

### 1. Installation

- Place the EnoLogic NetFilter CD in your CD-ROM drive, or use the appropriate setup files downloaded from the Internet.
- The installation will start automatically if Windows is configured for auto startup from CD-ROM drive. If the installation does not start automatically click *This Computer* on the Windows desktop and double click the EnoLogic NetFilter icon.
- The installation program will prompt you for your preferred language. This language will be used during the installation and by the installed software.
- You will then be given the choice between installing the entire EnoLogic NetFilter Business package, including EnoLogic NetFilter Admin, or just EnoLogic NetFilter Admin. EnoLogic NetFilter Admin is an administration program for EnoLogic NetFilter Business. Install EnoLogic NetFilter Business on a server and EnoLogic NetFilter Admin on any computer that you wish to use for remote administration of the server.
- After the installation is completed, EnoLogic NetFilter is installed as a service and will be started automatically the next time the machine is rebooted. You will be offered the choice between restarting the machine immediately or waiting. You must restart the machine before proceeding to the next section.

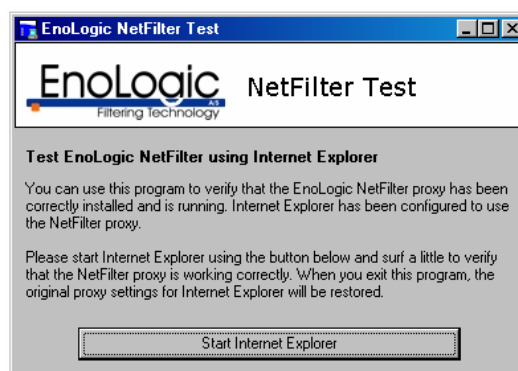
### 2. First execution

- The default TCP-port which EnoLogic NetFilter utilizes for browser communication is 3128. If another port is needed, e.g. if port 3128 is already in use by another service on the machine, this can be changed easily with the *EnoLogic NetFilter Admin* program which is described further in the manual.
- Before the clients in the network are configured to utilize EnoLogic NetFilter, it

must be examined if EnoLogic NetFilter is configured correctly and is able to access the Internet. If the port for browser communication has not been changed and Internet Explorer is installed on the machine, it can easily be verified with the *EnoLogic NetFilter Test* application. The program can be launched from the start menu by choosing

*Start->Programs->EnoLogic->NetFilter Business->NetFilter Test Tool*

Start the application and start Internet Explorer afterwards by clicking the *Start Internet Explorer* button shown in the figure below. If NetFilter is configured correctly, the browser will show a page with the message stating that NetFilter is installed correctly. Try visiting a page on the Internet to verify that you can connect to the Internet.



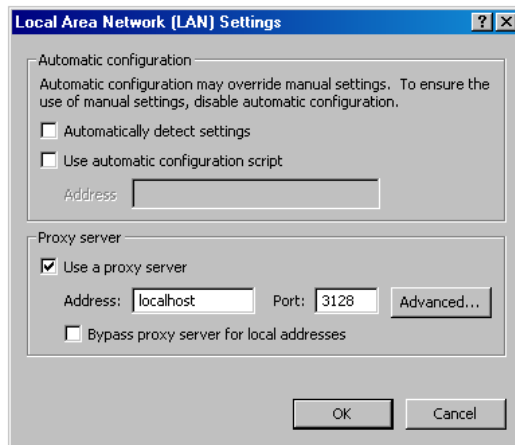
- Alternatively, you can open a browser and set the proxy server to the IP-address/machine name of the machine where NetFilter is installed and the port number to 3128 (unless another port has been chosen in EnoLogic NetFilter Admin). If the browser is open at the same machine as EnoLogic NetFilter, you may enter *localhost* as machine name.

In English/US versions of Internet Explorer 5 and higher, choose the menu

*Tools->Internet Options->Connections->LAN Settings*

Mark the checkbox *Use a proxy server*. Enter IP-address/machine name of EnoLogic

NetFilter in the *Address* field. Enter 3128 in the *Port* field.



To verify that EnoLogic NetFilter is installed and configured correctly, the address "http://are-you-alive" can be entered in the *Address* field in the browser. A correctly configured EnoLogic NetFilter will show a message stating that EnoLogic NetFilter is correctly installed. You can also visit a page on the Internet to make sure the server is correctly connected to the Internet.

- If a page is not shown correctly, it is important to examine if the page is working without using EnoLogic NetFilter in a browser which is not configured to use EnoLogic NetFilter. This should be done to make sure that the Internet page is not temporarily offline.

### 3. Server Configuration

- The settings for EnoLogic NetFilter, i.e. port number and integration with an existing proxy server, can be configured with the program *EnoLogic NetFilter Admin*, which is described in section 3 in the user's guide.

### 4. Client Machine Configuration

- Before the clients in the network can be analyzed by NetFilter, the browsers must be configured to utilize EnoLogic NetFilter as a proxy for HTTP traffic. This is described further in section 2.3 in the user's guide. If you are upgrading from EnoLogic TrafficAnalyzer, the clients may already be configured.

### 5. Further information

- More information about installation and use of EnoLogic NetFilter can be found in the user's guide, which can be opened from the Start menu by choosing

*Start->Programs->EnoLogic->NetFilter Business->NetFilter manual (PDF)*

after the software has been installed on the server.

- Further information about EnoLogic's product lines can be found EnoLogic's homepage:

<http://www.enologic.com>